

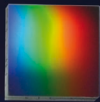


**SOL'Ex**

Ref. ES0036

All the optical elements to produce images of the Sun by scanning it (spectroheliography) at the wavelength of your choice.

SKU  
OP0177



A holographic grating of **2400 gr/mm** (25 x 25 mm)

SKU  
OP0176



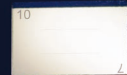
A custom-made collimating doublet with a diameter of **25.4 mm** and a focal length of **80 mm**.

SKU  
OP0181



A custom-made objective doublet with a diameter of **25.4mm** and a focal length of **125 mm**.

SKU  
SE0289



A reflective 2 positions slit of **7 and 10 μm** wide and **6 mm** long

**Evolution towards Star'Ex HR**

Ref. ES0037

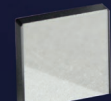
This kit adds everything you need to convert your Sol'Ex into a high resolution Star'Ex (with an autoguiding module and a slit with 4 different widths).

SKU  
OP0080



Two doublets with a diameter of **12.5mm** and a focal length of **50mm**.

SKU  
OP0010



A **15x15mm** mirror, thickness **3 mm**

SKU  
SE0288



A reflective slit 4 widths positions of **14, 20, 26 and 32 μm** + **25 μm** hole

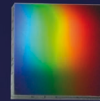


**Star'Ex HR**

Ref. ES0038

For high-resolution stellar spectra of luminous objects with an autoguiding module.

SKU  
OP0177



A holographic grating of **2400 gr/mm** (25 x 25 mm)

SKU  
OP0176



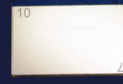
A custom-made collimating doublet with a diameter of **25.4mm** and a focal length of **80 mm**.

SKU  
OP0181



A custom-made objective doublet with a diameter of **25.4mm** and a focal length of **125 mm**.

SKU  
SE0289



A reflective 2 positions slit of **7 and 10 μm** wide and **6 mm** long

SKU  
OP0080



Two doublets with a diameter of **12.5mm** and a focal length of **50mm**.

SKU  
OP0010



A **15x15mm** mirror, thickness **3 mm**

SKU  
SE0288



A reflective slit 4 widths positions of **14, 20, 26 and 32 μm** + **25 μm** hole



**Star'Ex LR**

Ref. ES0039

For low-resolution stellar spectra of faint objects with an autoguiding module.

SKU  
OP0158



A grating of **300 gr/mm** (25 x 25 mm)  
Blaze at **500 nm**

SKU  
OP0176



A custom-made collimating doublet with a diameter of **25.4mm** and a focal length of **80mm**.

SKU  
OP0182



A custom-made objective doublet optimised in the visible range with a diameter of **25.4 mm** and a focal length of **80 mm**.

SKU  
OP0080



Two doublets with a diameter of **12.5mm** and a focal length of **50mm**.

SKU  
OP0010



A **15x15mm** mirror, thickness **3 mm**.

SKU  
SE0288



A reflective slit 4 widths positions of **14, 20, 26 and 32 μm** + **25 μm** hole

**Evolution towards Star'Ex near IR**

Ref. ES0033

To complement your low resolution Star'Ex and venture into the near infrared.

SKU  
OP0167



A grating of **300 gr/mm** (25 x 25 mm)  
Blaze at **1 μm**

SKU  
OP0184



A **570 nm** order filter diameter **25 mm**, thickness **2 mm**

SKU  
OP0183



A custom-made objective doublet optimised for the near infrared, with a diameter of **25.4 mm** and a focal length of **80 mm**.